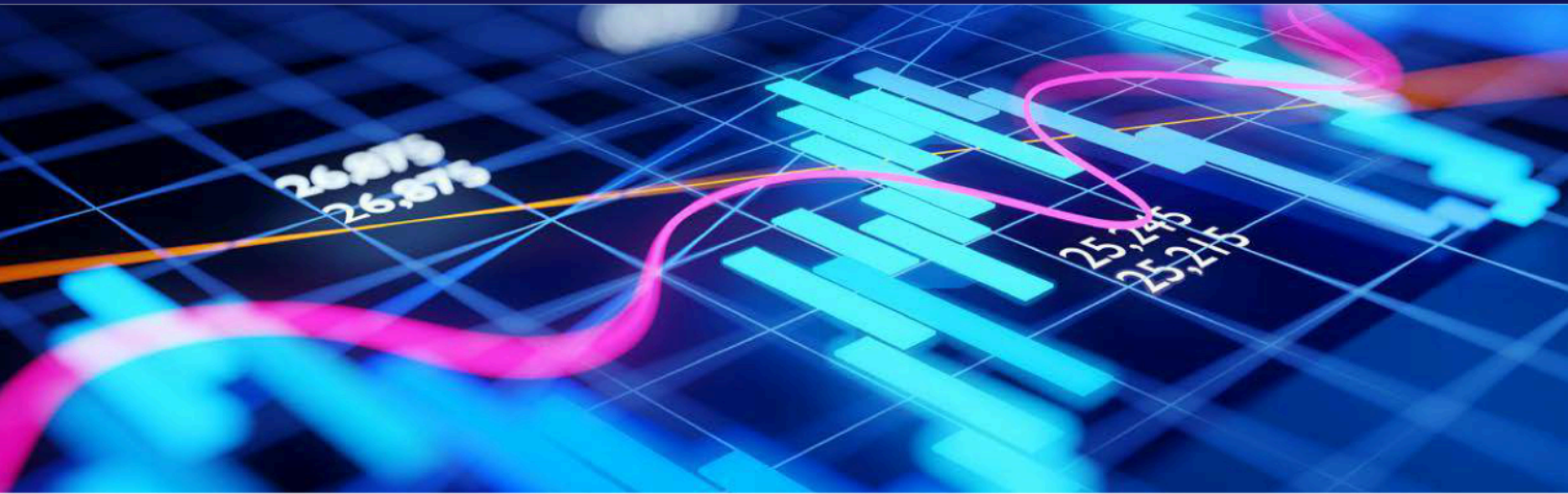


# Pursue stabilized exposure to U.S. equities



Looking for exposure to a dynamic combination of equity and fixed income assets? Consider a crediting strategy powered by the Shiller Barclays CAPE® Allocator 6 Index (Ticker Symbol: BXIISC6E), a member of the Barclays family of Shiller Barclays CAPE® indices, which are based on principles of long-term investing distilled by Professor Robert Shiller.

Balancing your risk tolerance with your needs is an important part of managing retirement planning goals. This index aims to provide exposure to U.S. sectors that appear to be undervalued according to their relative Cyclically Adjusted Price to Earnings (CAPE®) ratio and a basket of U.S. Treasuries.

## Building blocks

- The index is made up of an Equity Component and a Treasury Component which are systematically analyzed and weighted to determine the optimal combination.
- The Equity Component consists of four undervalued U.S. Equity Sectors<sup>1</sup> chosen monthly, based on their Relative CAPE® ratios and momentum. The Treasury Component consists of a basket of U.S. Treasuries.
- The two Components are reviewed every two weeks to find the optimal combination based on past performance and volatility. In order to maintain a 6% volatility target, exposure to the base index may be adjusted on a daily basis, if needed.<sup>2</sup>

## About Professor Robert Shiller

American economist and Sterling Professor of Economics at Yale University

Co-Director of the Behavioral Finance Workshop at the National Bureau of Economic Research since 1991

Developed of the CAPE® Ratio

This material is provided by Athene Annuity and Life Company (61689) headquartered in West Des Moines, Iowa, which issues annuities in 49 states (excluding NY) and in D.C. Product features and availability may vary by state and/or sales distributor.

**INVESTMENT AND INSURANCE PRODUCTS ARE: • NOT FDIC INSURED • NOT INSURED BY ANY FEDERAL GOVERNMENT AGENCY • NOT A DEPOSIT OR OTHER OBLIGATION OF, OR GUARANTEED BY, THE BANK OR ANY OF ITS AFFILIATES • SUBJECT TO INVESTMENT RISKS, INCLUDING POSSIBLE LOSS OF THE PRINCIPAL AMOUNT INVESTED**

## How you earn interest

Potential interest credits are based in part on the performance of the Shiller Barclays CAPE® Allocator 6 Index during each Index Term Period, subject to a Participation Rate.

Once earned, interest credits are locked in and cannot be lost to future market downturns. You will never receive less than 0% interest in any crediting period.

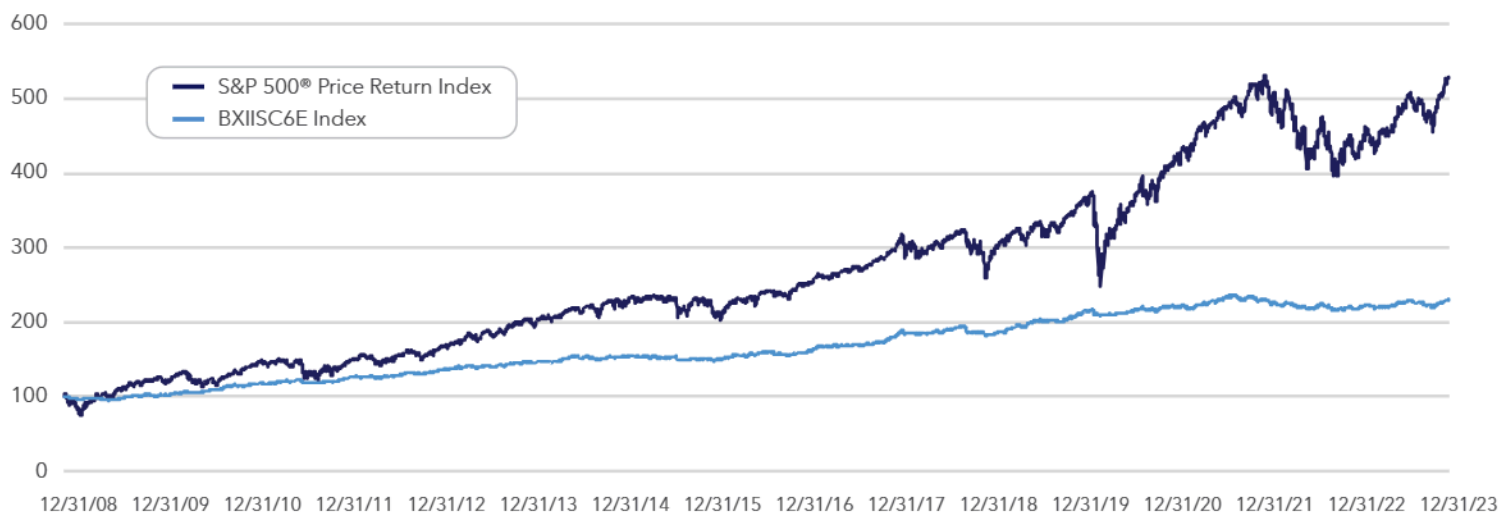
## Choosing an interest crediting strategy in your Athene fixed indexed annuity

The Shiller Barclays CAPE® Allocator 6 Index may be appropriate for you if you want an index that seeks to:

- Achieve stabilized exposure to undervalued U.S. sectors.
- Mitigate the impact of increasing interest rates.
- Manage the risk of volatility in the underlying index with a volatility control mechanism.

A dynamic index that provides stabilized exposure to undervalued U.S. sectors

### Shiller Barclays CAPE® Allocator 6 Index: Hypothetical Index Values



The Shiller Barclays CAPE® Allocator 6 Index inception date is 12/02/2020. This scenario illustrates both pre-inception performance data of the Index, as provided by Barclays, based on the hypothetical closing index data from 12/31/2008 through 12/01/2020 and actual performance data after the inception date through 12/31/2023.

Index performance reflects back-tested results, which is not actual performance but is calculated by applying the index methodology (designed with the benefit of hindsight) to historical financial data. While the index did not exist during this time period, the components did. Back-tested performance is hypothetical and has been provided for informational purposes only. It is not intended to predict future performance and actual performance will vary, perhaps materially, from the hypothetical performance shown above. The hypothetical performance of the index does not correlate directly to index credits. Please refer to the Index Strategy Insert for more information about how interest is credited.

## A powerful combination

**Barclays:** A global financial services provider with over 48 million customers worldwide, Barclays is engaged in retail banking, credit cards, corporate and investment banking and wealth management.

**Athene:** An industry leader known for bringing innovative annuity products to market.

## Want to learn More?

Visit [Indices.Barclays/ShillerAllocator](https://indices.barclays/shillerallocator). Then, contact your Athene financial professional to see how this custom index can help provide growth opportunity and volatility control.

<sup>1</sup> Each sector is represented by an Exchange Traded Fund.

<sup>2</sup> The Shiller Barclays CAPE® Allocator 6 Index is an excess return index. The Equity Component includes a deduction equal to the USD 1-month LIBOR rate (before April 26, 2022) or SOFR plus 0.1145% (after April 26, 2022), and the Treasury Component derives returns based on the changes in the price of the underlying instruments and the profit or loss from rolling one futures contract to another. In addition, the index includes a 0.50% annual fee on the Equity Component and a 0.20% annual fee on the Treasury Component. Because this index applies a volatility control mechanism, the range of both positive and negative performance of the index is limited.

While there is no stated Cap Rate with this strategy, certain limitations such as a Participation Rate will apply. Interest credits, if any, are calculated and credited at the end of the Index Term Period. Interest credits are based upon the point-to-point movements of this index over the Index Term Period, subject to stated limitations. It is possible that the interest earned may be zero. Index Crediting strategies may be added or eliminated at the company's discretion, and may not be available in all states. If a strategy is eliminated, its value will be reallocated to the Fixed Strategy.

Indexed annuities are not stock market investments and do not directly participate in any stock or equity investments. Market indices may not include dividends paid on the underlying stocks, and therefore may not reflect the total return of the underlying stocks; neither an index nor any market-indexed annuity is comparable to a direct investment in the equity markets.

**Shiller Barclays CAPE® Allocator 6 Index** • The Shiller Barclays CAPE® Allocator 6 Index has been developed in part by RSBB-I, LLC, the research principal of which is Robert J. Shiller. RSBB-I, LLC is not an investment advisor, and does not guarantee the accuracy or completeness of the Shiller Barclays CAPE® Allocator 6 Index, or any data or methodology either included therein or upon which it is based. Neither RSBB-I, LLC nor Robert J. Shiller or any of their respective partners, employees, subcontractors, agents, suppliers and vendors (collectively, the "Protected Parties") shall have any liability, whether caused by the negligence of a Protected Party or otherwise, for any errors, omissions, or interruptions therein, and make no warranties, express or implied, as to performance or results experienced by any party from the use of any information included therein or upon which it is based, and expressly disclaim all warranties of merchantability or fitness for a particular purpose with respect thereto, and shall not be liable for any claims or losses of any nature in connection with the use of such information, including but not limited to, lost profits or punitive or consequential damages, even if RSBB-I, LLC, Robert J. Shiller or any Protected Party is advised of the possibility of same.

Neither Barclays Bank PLC ("BB PLC") nor any of its affiliates (collectively "Barclays") is the issuer or producer of Athene fixed index annuities (the "Products") and Barclays has no responsibilities, obligations or duties to purchasers of the Products. The Shiller Barclays CAPE® Allocator 6 Index (the "Index"), together with any Barclays indices that are components of the Index, is a trademark owned by Barclays and, together with any component indices and index data, is licensed for use by Athene Annuity and Life Company ("Athene") as the issuer or producer of the Products (the "Issuer").

Barclays' only relationship with the Issuer in respect of the Index is the licensing of the Index, which is administered, compiled and published by BB PLC in its role as the Index sponsor (the "Index Sponsor") without regard to the Issuer or the Products or purchasers of the Products. Additionally, Athene as issuer or producer of the Products may for itself execute transaction(s) with Barclays in or relating to the Index in connection with the Products. Consumers acquire the Products from Athene and neither acquire any interest in the Index nor enter into any relationship of any kind whatsoever with Barclays upon purchasing the Products. The Products are not sponsored, endorsed, sold or promoted by Barclays and Barclays makes no representation regarding the advisability of the Products or use of the Index or any data included therein. Barclays shall not be liable in any way to the Issuer, purchasers of the Products or to other third parties in respect of the use or accuracy of the Index or any data included therein.

**S&P 500® Index** • The S&P 500® Index (the "Index") is a product of S&P Dow Jones Indices LLC or its affiliates ("S&P DJI") and has been licensed for use by Athene Annuity and Life Company ("Athene"). S&P®, S&P 500®, US 500, The 500, iBoxx®, iTraxx® and CDX® are trademarks of S&P Global, Inc. or its affiliates ("S&P"); Dow Jones® is a registered trademark of Dow Jones Trademark Holdings LLC ("Dow Jones"). Athene's products are not sponsored, endorsed, sold or promoted by S&P DJI, Dow Jones, S&P, or their respective affiliates, and none of such parties make any representation regarding the advisability of investing in such product(s) nor do they have any liability for any errors, omissions, or interruptions of the Index.

This material is a general description intended for informational and educational purposes. Athene Annuity and Life Company (61689), headquartered in West Des Moines, Iowa, and issuing annuities in 49 states (excluding NY) and in D.C., is not undertaking to provide investment advice for any individual or in any individual situation, and therefore nothing in this should be read as investment advice. Please reach out to your financial professional if you have any questions about Athene products or their features.

The term "financial professional" is not intended to imply engagement in an advisory business with compensation unrelated to sales. Financial professionals will be paid a commission on the sale of an Athene annuity.

**This insert must be accompanied by the applicable product brochure and Certificate of Disclosure which provide more detailed product information, including all charges or limitations as well as definitions of capitalized terms.**



Athene Annuity and Life Company  
7700 Mills Civic Parkway  
West Des Moines, IA 50266-3862  
[Athene.com](http://Athene.com)

Retirement is not just the end of a job. It's the beginning of a life you've worked, dreamed and planned for. Whatever excites you about your next move, annuities from Athene can help you take on the challenges you can't wait to face. An industry leader, we're driven by what drives you: the confidence to retire your way.